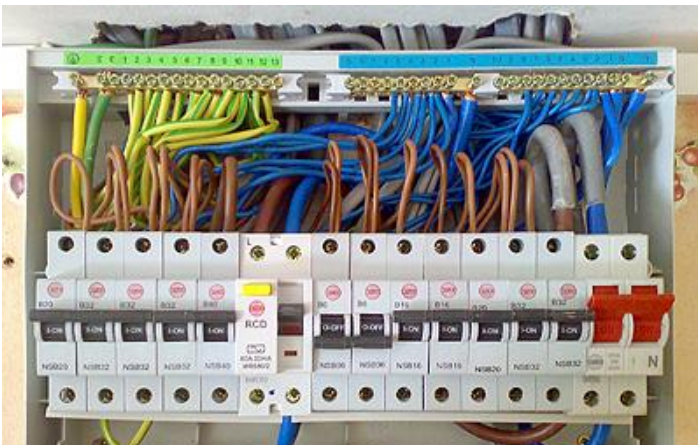


## Network Rail Business Space Electrical periodic Inspection and Testing.



Original electrical installation at 119 Commerce Street,  
Glasgow



Completing electrical installation testing as per BS7671



All work completed using the latest approved and  
calibrated equipment.

## ELECTRICAL TESTING OF FIXED INSTALLATIONS

As part of Network Rail's planned preventative maintenance project within the retail sector, CPMS have been asked to provide complete electrical inspection and testing of the fixed electrical installations to satisfy the requirements of BS7671.

The project comprised of the following elements:-

- Complete visual inspection of all electrical accessories.
- Carryout a series of 'Dead' testing on the circuits.
- Carryout a series of 'Live' testing on the circuits.
- Install required labelling.
- Complete NICEIC electrical condition report and issue to client.
- All works done at a time to suit our clients with minimum inconvenience and disruption.