

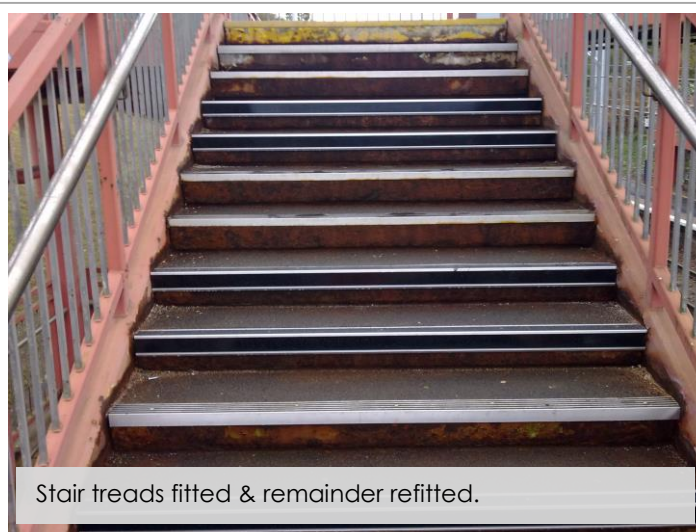
**Baillieston Station  
First Scotrail  
Reactive Maintenance Works**



Example of badly corroded stair treads.



Replacement treads fitted.



Stair treads fitted & remainder refitted.

## **STAIR TREADS REPAIR AND RENEWAL**

As part of the First Scotrail Reactive Maintenance Works, CPMS were asked to attend Baillieston Station and carry out repairs to the footbridge stair treads which were badly corroded.

The works comprised of the following elements:-

- Safe removal and disposal of corroded stair treads.
- Installation of new replacement stair treads.
- Clean up and re-fixing of the remainder of stair treads.
- Work completed on time and budget, with no issues.