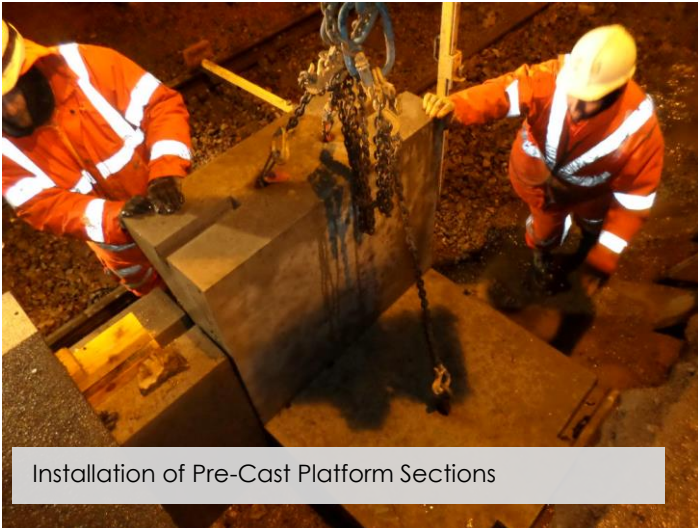


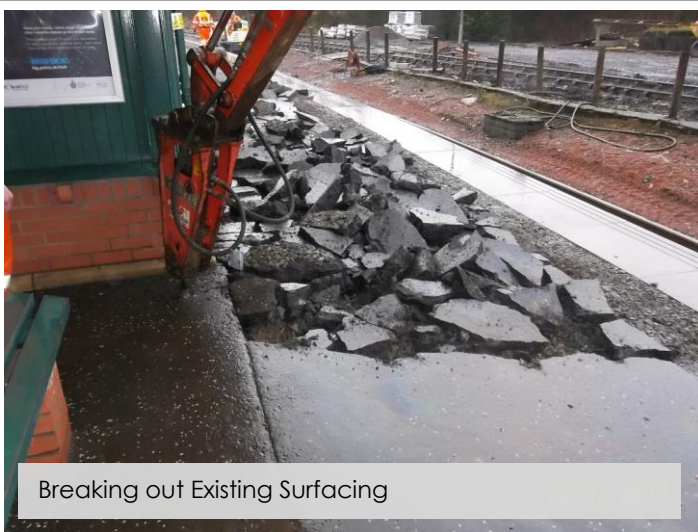
Crianlarich Station Network Rail Platform Refurbishment



Commercial Property Maintenance Services Ltd



Installation of Pre-Cast Platform Sections



Breaking out Existing Surfacing



Completed platform

PLATFORM PARTIAL RENEWAL AND REFURBISHMENT

CPMS were awarded the contract by Network Rail for partial renewal of platform walls, copes, resurfacing, and installation of tactile studs.

- The island platform at Crianlarich Station was severely damaged by frost heave during a severe winter.
- A large section of both platforms at the North end required propping with timber shoring.
- This was a Design and Build Contract for the partial rebuilding of existing station platforms, including the following:
 - Precast concrete Platform walls, over sails, copes, resurfacing, stud tactiles and drainage.
 - Work's completed on time and budget with no issues.